



Total Solution Provider in Saw Device

SA07014AD1

70.0 MHz IF SAW Filter

14.0MHz Bandwidth

Revision 0: 27. December. 2007



- Electrical Characteristics
 - Package Dimensions
 - Testing Environment
 - Frequency Characteristics
-

SAWNICS Inc.

460 Cheonheung-ri, Seonggeo-eup, Cheonan-si, Chungcheongnam-do, 330-836 / Korea.
Tel: +82 41 550 9372 / Fax: +82 41 550 9399 / www.sawnics.com

□ Electrical Characteristics

Maximum Ratings

Parameters Description	Unit	Minimum	Typical	Maximum
Operation Temperature Range	°C	-30	-	80
Storage Temperature Range	°C	-40	-	85
Maximum DC Voltage	V	-	-	10
Maximum Input Power	dBm	-	-	10
Source Impedance (single ended) ⁽¹⁾	Ω	-	50	-
Load Impedance (single ended) ⁽¹⁾	Ω	-	50	-
Package type & size	D1			
Length x Width	mm ²	-	20.0 x 9.8	-
Height	mm	-	-	1.8

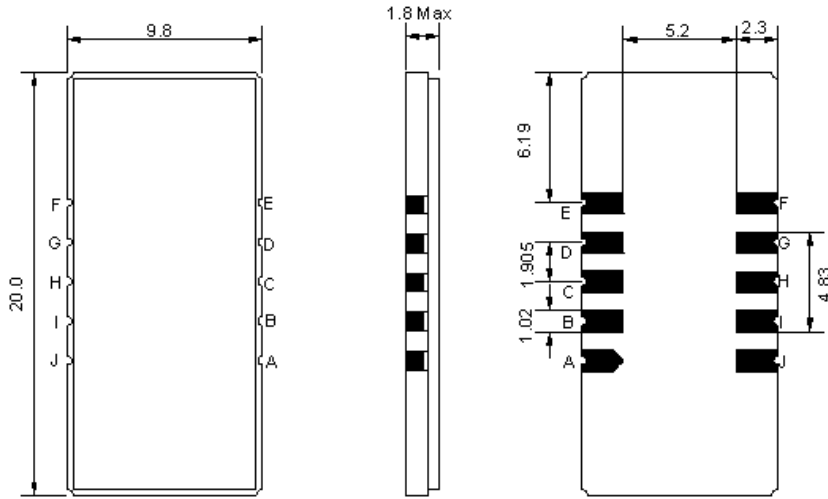
Electrical Specification

Parameters Description	Unit	Minimum	Typical	Maximum
Center Frequency (Fo)	MHz	69.90	70.00	70.10
Insertion Loss at Fo	dB	-	21.0	24.0
Amplitude Ripple Variation at Fo ±7.0 MHz	dB _{p-p}	-	0.55	1.0
Group Delay Variation at Fo ±7.0 MHz	nsec	-	50	100
Absolute Delay at Fo	µsec	-	2.34	-
Temperature Coefficient	ppm/°C	-	-72	-
Bandwidth at -1.0 dB	MHz	-	14.82	-
Bandwidth at -3.0 dB	MHz	14.90	15.15	-
Bandwidth at -40.0 dB	MHz	-	16.48	16.80
Lower Sidelobe	dB	50	55	-
Upper Sidelobe	dB	50	55	-

Notes : (1) With Matching Network (Ref. Testing Environment Circuit as shown below).

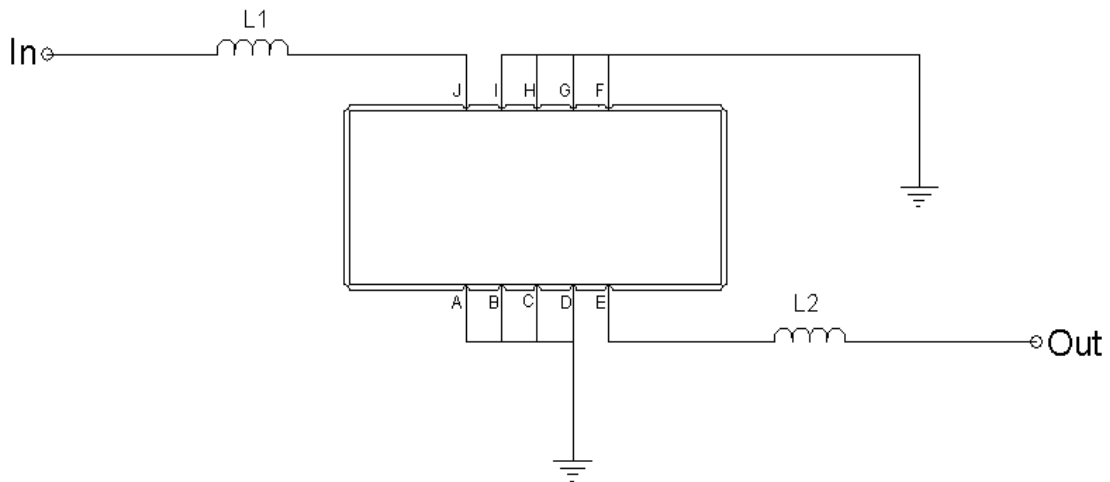
Those impedances could be modified with different impedance values and/or structures, if necessary.

Package Dimensions



Pin Description	
A, B, C, D, F, G, H, I	Ground
J	Input
E	Output

Testing Environment



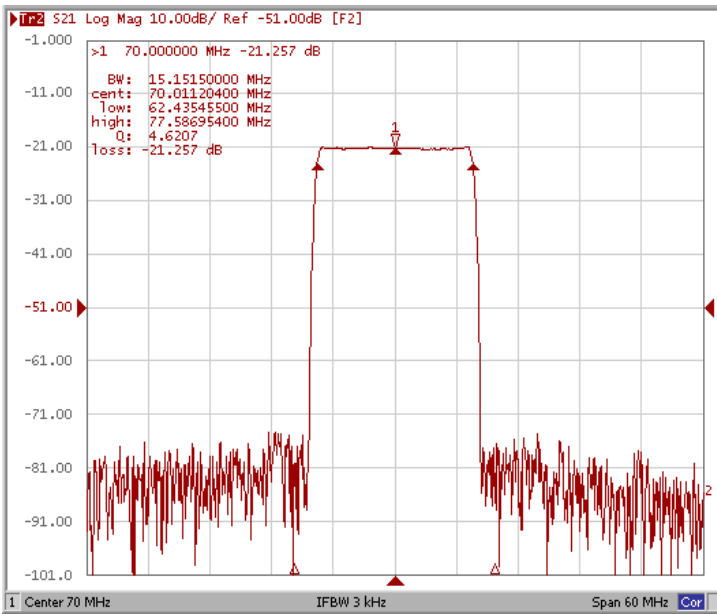
Test Fixture & Values	
Input	L1=180nH
Output	L2=100nH
Source/Load Impedance	50 Ω



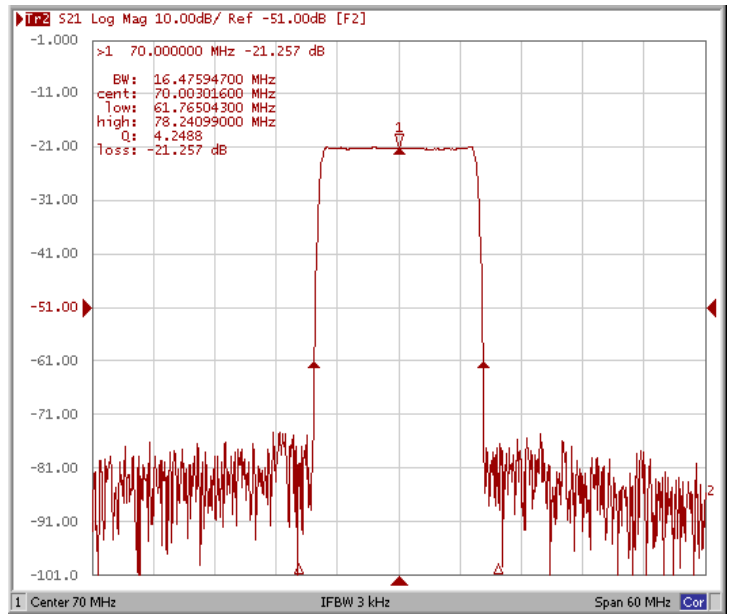
□ Frequency Characteristics

Frequency Response

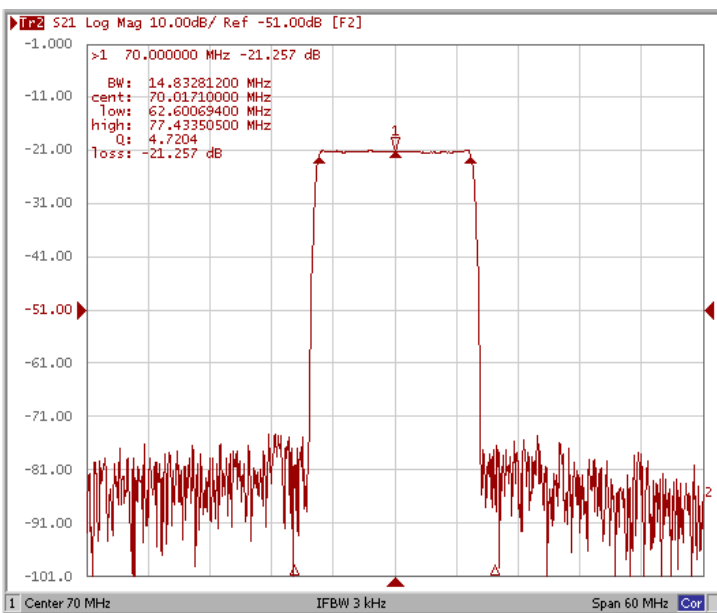
Bandwidth at -3.0 dB



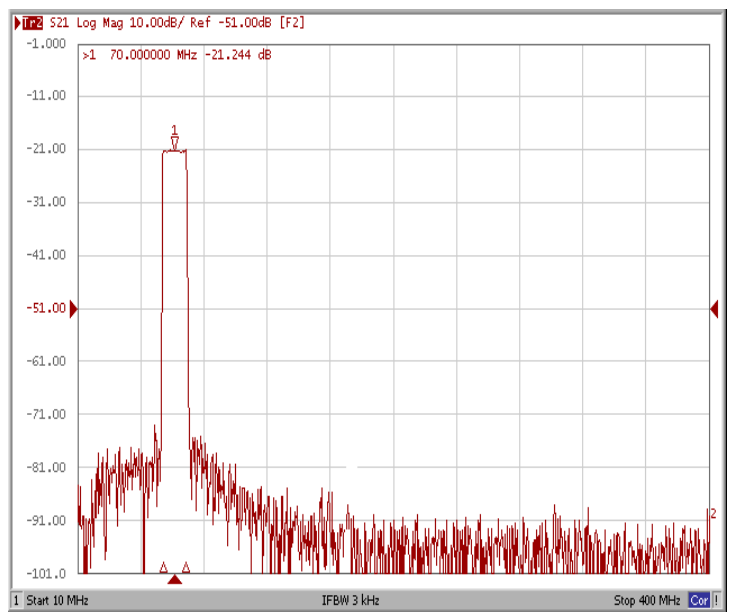
Bandwidth at -40.0 dB



Bandwidth at -1.0 dB



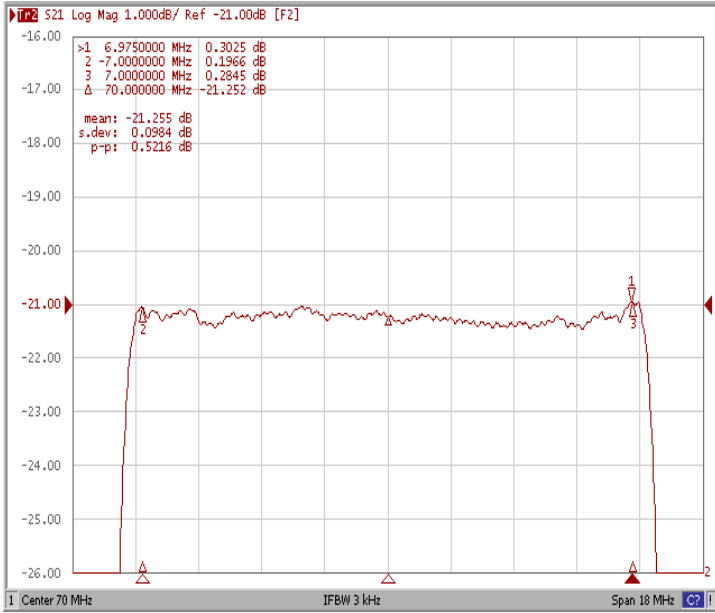
Wide Band



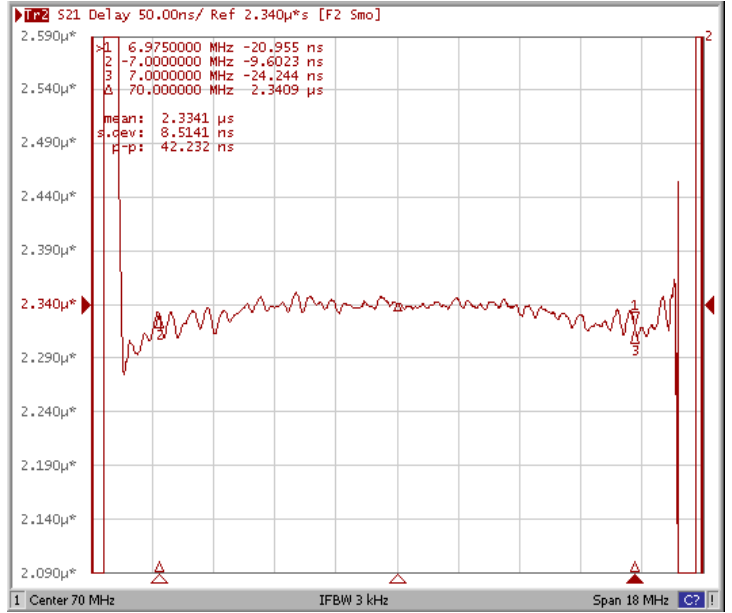
Frequency Characteristics

Frequency Response

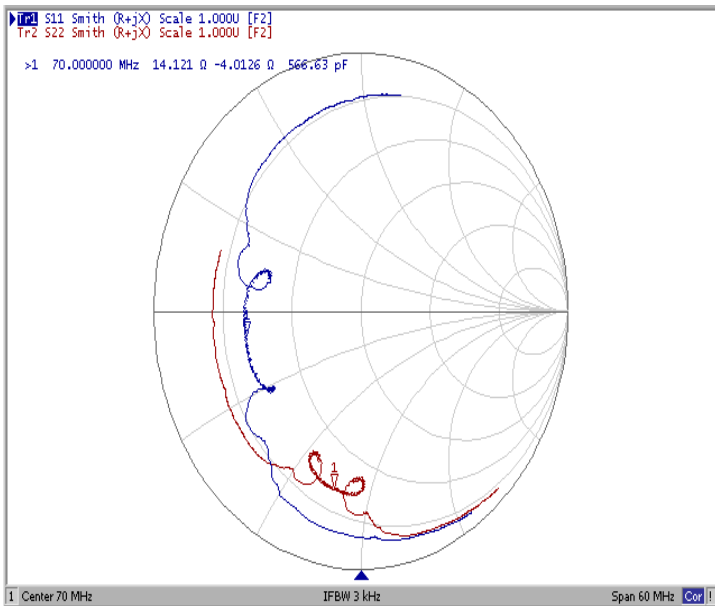
Ripple Variation



Group Delay Variation



Smith Chart



VSWR

